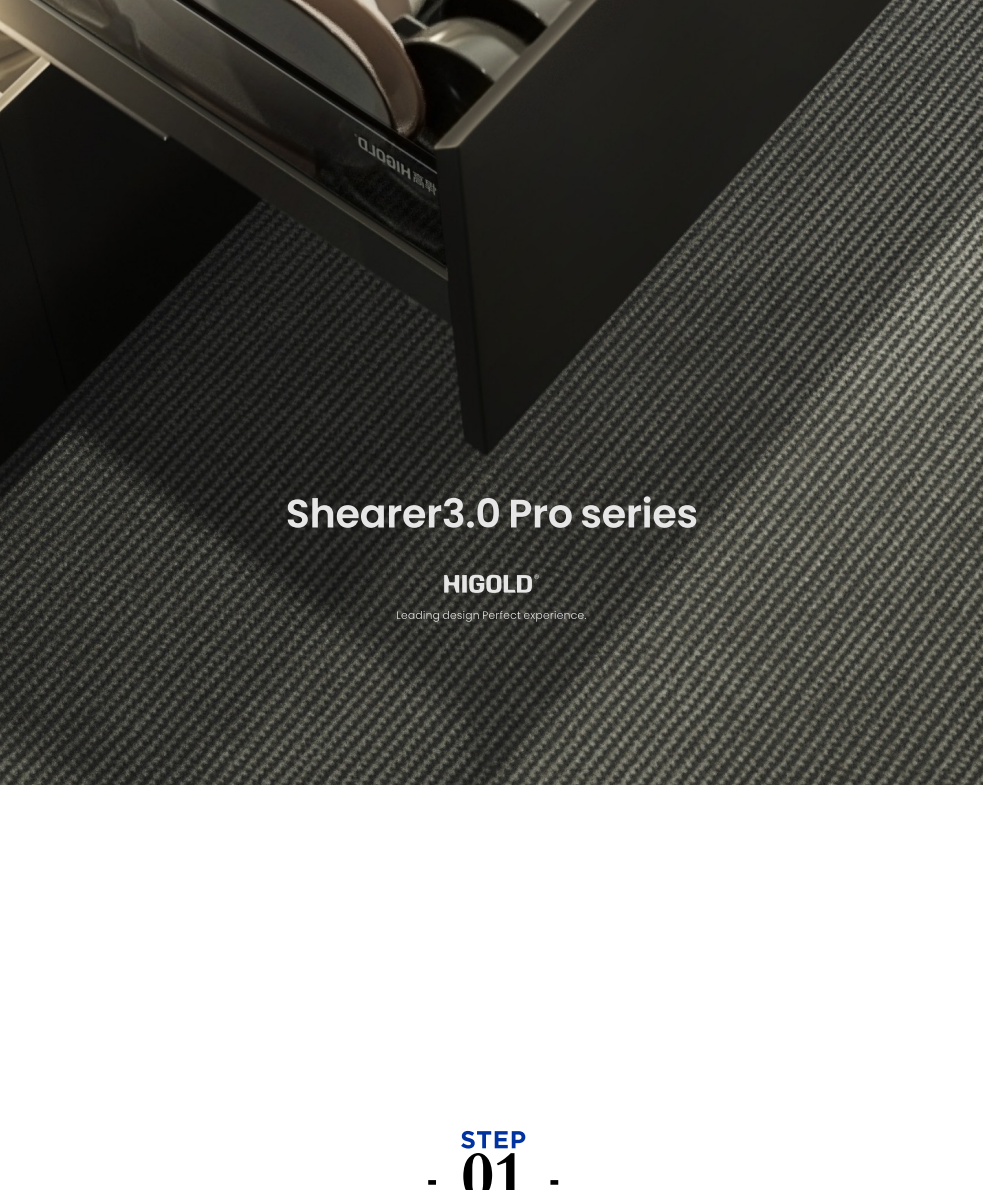


HIGOLD®

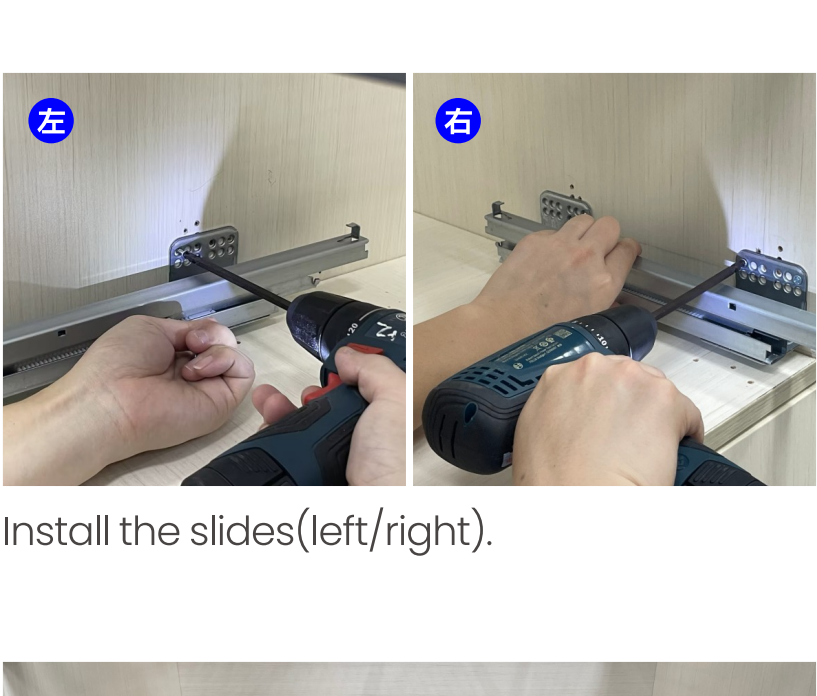
Shearer 3.0 Pro Pull Out Basket

Installation manual

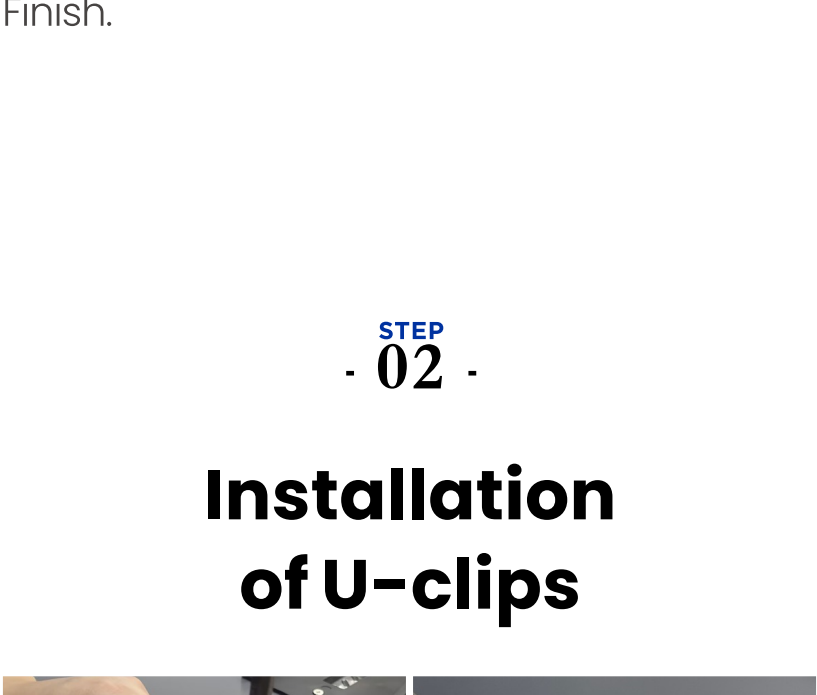


STEP
- 01 -

Installation of Slide



For the lower layer, use the installation template to pre - drill holes (left/right).



Install the slides(left/right).



Finish.

STEP
- 02 -

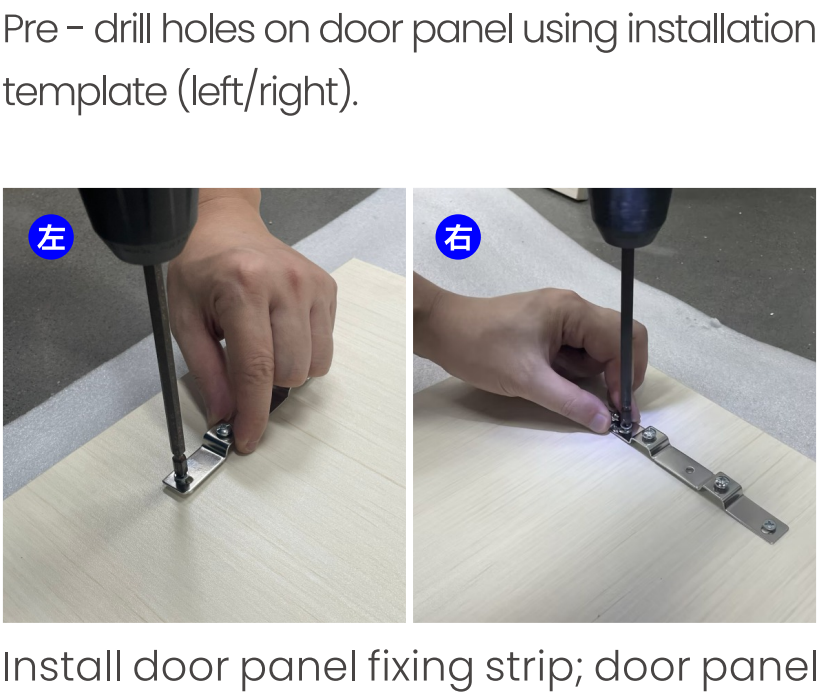
Installation of U-clips



Install U-clips on basket bottom, tighten screws; U-clips installed.

STEP
- 03 -

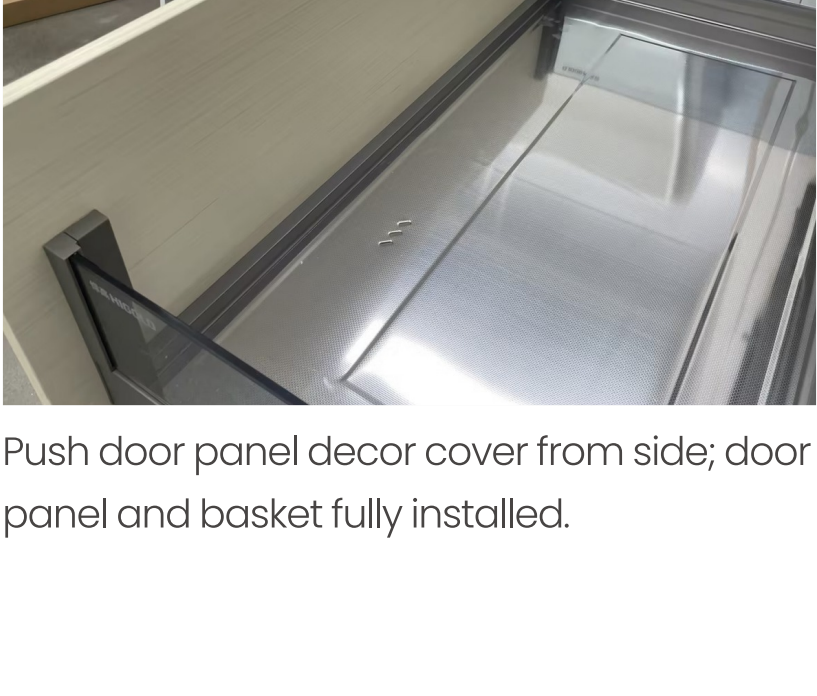
Installation of Pull-out Basket



Hook slide tail into place/align front with U-clip and press down; basket installed.

STEP
- 04 -

Installation of Door Panel



Pre - drill holes on door panel using installation template (left/right).



Install door panel fixing strip; door panel installed.



Secure door panel to basket, adjust door panel, tighten screws.



Push door panel decor cover from side; door panel and basket fully installed.

STEP
- 04 -

Installation of Accessories



Push water tray in from bottom.

STEP
- 05 -

Finish

Finish installation.

STEP
- 06 -

Shearer 3.0 Pro Pull Out Multi Purpose Basket

Installation of slide and water tray are the same as Shearer 3.0 Pro Pull Out Basket.

Install dish rack and chopstick box.

Note: It is recommended to install the multi purpose pull out basket(for dishes and bowls) on the upper layer and the pull out basket (for pots) on the lower layer. For double-layer installation, pre-drill slide holes at one time using the installation template, then install the slide before installing the baskets.

